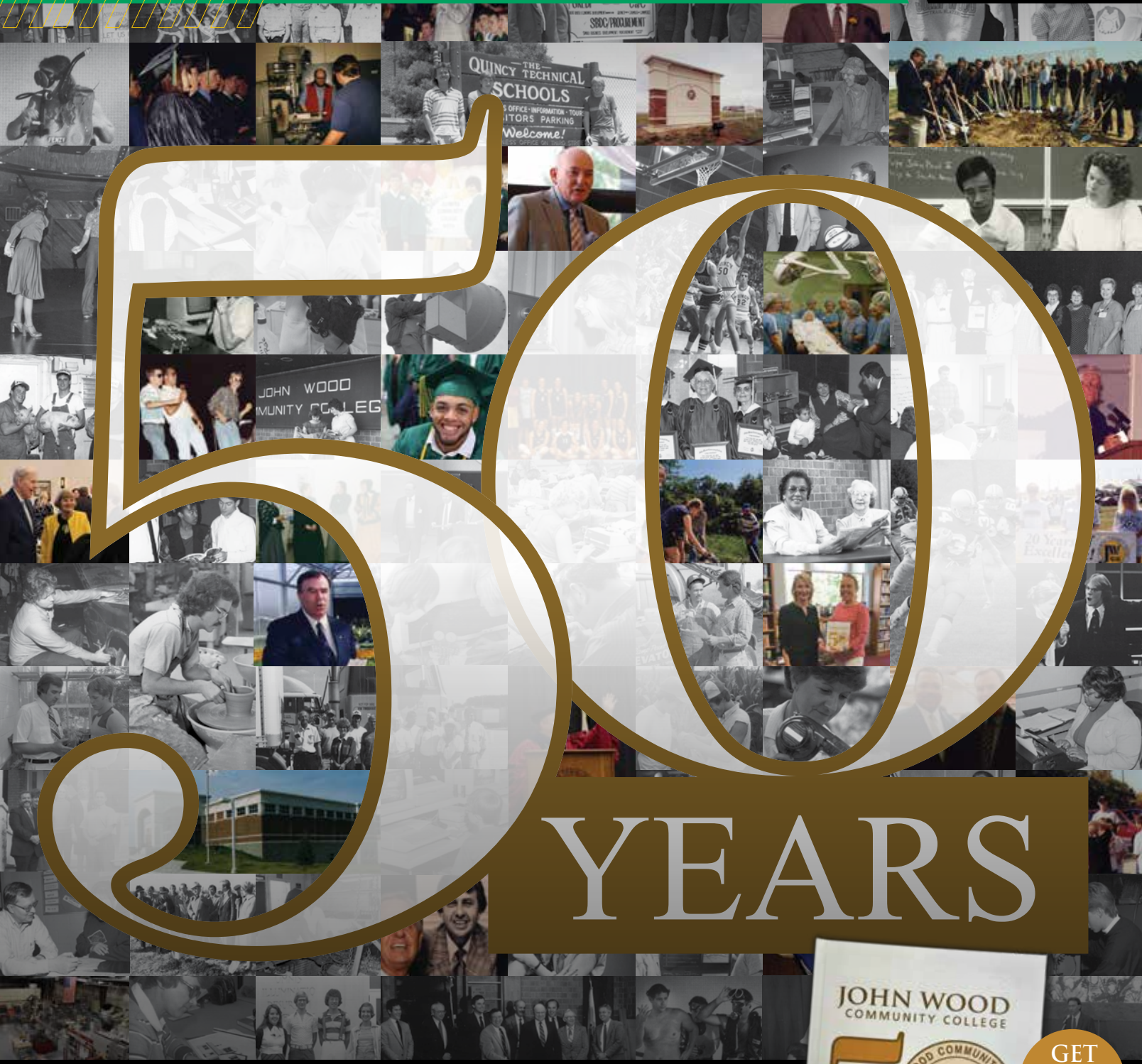


JOHN WOOD



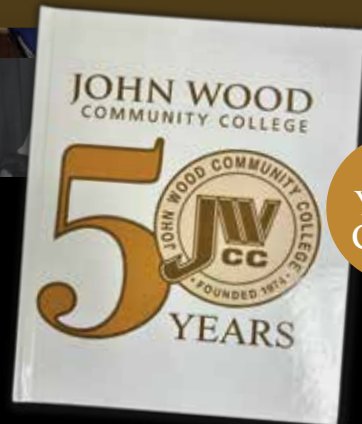
COMMUNITY COLLEGE UPDATE

2024



YEARS

JWCC'S 50th Anniversary Book features firsthand accounts of a college once resisted, now respected. Learn more on page 13.



GET YOUR COPY!



TRUE TRAIL
BLAZERS



First Board of Trustees, legal counsel, and administration.

When John Wood Community College was founded in 1974, many in the community weren't sure it was needed. Fifty years later, JWCC has become an essential part of the region, driving the local economy, and helping students achieve their dreams. In its golden anniversary year, the College forged into the future to help students seize their potential by opening new pathways to further connect education with fulfilling careers.



2024-25 JWCC Board of Trustees

Forging INTO



HIGHLIGHTS FROM THE 50TH YEAR



Recognized by the prestigious Aspen Institute as one of the top 150 community colleges in the country. This accolade is based on rigorous metrics that benchmark colleges against each other to highlight exceptional performance in fostering student achievement and success.



Launched Illinois' first Federation of Advanced Manufacturing Education (FAME) chapter. Great River FAME is a partnership among JWCC, Great River Economic Development Foundation, DOT Foods, Gardner Denver, General Mills, Knapheide, and Titan Wheel. A cohort of 15 students was selected in June 2024 to work for a FAME employer three days a week at \$22 per hour and train at the JWCC Workforce Development Center in advanced manufacturing two days a week. Upon completion of the two-year program, students are guaranteed to earn \$63,000 annually.



Joined the American Association of Community College's Guided Pathways movement, which assists with early identification of career paths, streamlines courses within degree pathways, and more deeply connects classroom learning with future careers.



THE Future



Received a grant from the Institute for Evidence Based Change to create a Caring Campus program to build a more supportive environment where students feel seen, heard, and valued. This effort is vital in keeping students on track to complete certificates and degrees.

Introduced the Pathways to Promise Scholarship Drive to raise \$500,000 as part of a longer-term plan to help more students complete their first two years of college without incurring debt. See more on page 12.

Hosted a 50th Anniversary community celebration featuring remarks from original trustees, retirees, alumni, and JWCC Foundation board members, and released a commemorative book chronicling JWCC's history.



Jim Reed, an original JWCC Trustee.

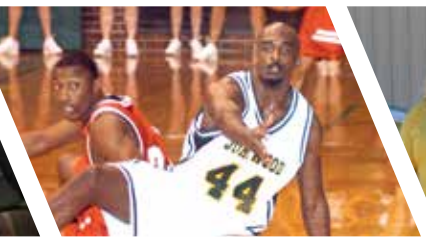
Established a permanent University Transfer Center to help students with transfer and scholarship planning. Located in the library, the Center ensures seamless credit transfers and efficient degree completion. University partners will hold regular sessions at the Center to provide information on transfer requirements, academic programs, and scholarships.



FIRST LEADER FOR THE NEXT 50 YEARS

Dr. Bryan Renfro was officially installed as JWCC's seventh president on November 3, 2023. Renfro's inauguration was much like his leadership, focused on the success of John Wood Community College students.

As the College enters the next 50 years, it continues to model the spirit of the first Trail Blazers, who relentlessly worked to serve our communities and expand access to higher education for everyone.





Next Gen TRAILBLAZERS

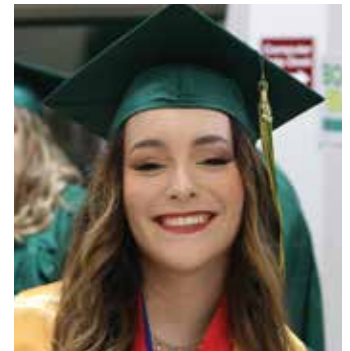
John Wood Community College's 49th commencement was a vivid reminder of the institution's impact upon the next generation of students. Among this year's graduates were future engineers, a dedicated hospice nurse, and three students earning associate degrees alongside their high school diplomas. Others are set to become financial analysts, teachers, agronomists, truck drivers, social workers, and welders, embodying the pioneering spirit of JWCC and future of the region.



(Left) JWCC's long-standing legal counsel Jim Rapp pictured with his wife, Martha, was honored with the College's first honorary degree for his advocacy, wisdom, and investment in the students of the region and mission of community colleges.

STUDENT SPOTLIGHT

Clancy Crawford earned both an Associate of Engineering Science and an Associate in Science. She will transfer to Embry-Riddle Aeronautical University to double major in aerospace engineering and computer science with a minor in rocket propulsion.



Pinning and Beginning

In addition to the full commencement ceremony, JWCC recognized 37 registered nursing and 28 practical nursing graduates during a formal pinning event. The College also celebrated 21 students who completed their GED high school credential during a summer ceremony. Many of the GED grads will begin college courses at JWCC this fall.



“...As much as you win, things will always get worse; and as much as you lose, things will always get better. And these aren't bad things. If you keep learning from your mistakes...all you need is to win that one percent more than you lose, and your success will be inevitable.

Today, we stand in the one percent difference - proving that no matter what life throws at us, we will always win more than we lose.”

– Excerpt from remarks given by **Brooks Sonethongkham**. A 2024 QHS graduate, Brooks earned his Associate in Art through JWCC's Smart Start Transfer Academy.



Avery Hayes shared his inspiring journey as a student commencement speaker. He dropped out of high school to start a family early in life. Along the way, Avery began work, earned his GED, and he and his wife grew their family of six children. One day his employer asked him to attend a manufacturing course at JWCC's Workforce Development Center. One course turned into two certificates and an associate degree in the manufacturing and automation field.

528 DEGREES & CERTIFICATES AWARDED

317 Associate in Applied Science & Certificates

Primarily focused on **skills training for immediate employment in key workforce sectors.**

Most popular degrees and certificates include:



Agriculture



Health Sciences



Welding



Electrical Technology

211 Associate in Art or Science

First two years of a bachelor's degree transferrable to a four-year university.

Most popular degrees include:



Business



Psychology



Sociology



Education





RESPONDING TO THE REGION: Regional Center News

PAVING NEW WORKFORCE PATHWAYS

On May 29, 2024, John Wood Community College cut the green ribbon on a 14,170 foot expansion to its Workforce Development Center, creating new opportunities for students to pursue career and technical

education pathways. New features of the \$6 million project largely funded by a Federal grant include expanded welding stations, additional truck bays, mixed-reality technology, the Gardner

Denver Computer-Aided Design Lab, HVAC lab, Rotary Club of Quincy Community Commons, and customized training classrooms for business and industry.



SCAN ME

Scan for a full catalog of business and industry training.



The Brown County Promise for College and Careers

The Tracy Family Foundation recently announced The Brown County Promise Program to benefit graduating seniors from Brown County High School (BCHS) starting with the Class of 2024. BCBS grads choosing to enter John Wood Community College may likely have tuition covered through the program. Qualifying BCBS 2024 graduates will be eligible for up to \$4,000 (full tuition for most students), up to two years, at JWCC towards a trade certificate or associate degree, plus a \$500/year bonus for education related expenses. Marcy Wort, JWCC's Student Success Coach for Brown County students, and Jeanne Yingling, Mt. Sterling Education Center Specialist, stand ready to help students and families navigate college and career opportunities.



Fifteen of the 28 Brown County Promise students will enter JWCC this Fall.

Ag Programs *Poised for the Future*



Jody Heavner



Mike Tenhouse

JWCC Agricultural Programs are positively poised for the future with the announcement of Jody Heavner as the new Director of Agricultural Education. She will work with Ag Instructors Justin Lewis and Bethany Beeler (pictured right) to serve JWCC students. Heavner succeeds Mike Tenhouse, who shepherded the program for nearly 25 years, mentoring hundreds of ag students who are now part of the fabric of the ag community.



» INAUGURAL AG HALL OF FAME

Two alumni and two JWCC ag supporters were honored as part of the College's inaugural Agriculture Hall of Fame sponsored by the Ag Alumni Association. Inductees included the following:

Larry Fischer, who served as an Ag Instructor and Director of JWCC's Ag Program. He also served seven years as Vice President of Instruction at JWCC. Fischer is a current member of the JWCC Board of Trustees.

Donna Jansen, who attended JWCC from 1985 to 1986 and served as the Ag Alumni Board Chair, is President of the JWCC Foundation and a Senior Sales Representative for Boehringer-Ingelheim Animal Health.

Don Peter is the owner of Peter Farms in Mendon. He was a member of the Ag Advisory Council, part of the JWCC Ag Vision 2000 Expansion Project, and supported JWCC's livestock evaluation contests and teams.



Larry Fischer



Donna Jansen



Don Peter



Bob Rhea

Bob Rhea was part of the first JWCC Ag Class of 1978 and served as a JWCC Ag Instructor. Rhea was named the first JWCC Outstanding Alumnus in 2018, served as the Ag Alumni Board Chair, and is currently the Chair

of the JWCC Board of Trustees. He is the Chief Executive Officer for Illinois Farm Business Management.

LIVESTOCK EVALUATION TEAM EARNS NATIONAL ACCLAIM



JWCC's Livestock Evaluation Team earned national acclaim during the 2023-24 academic year. The team captured first place in the Livestock Management Two-Year College category at the 2024 North American Colleges and Teachers of Agriculture (NACTA) Judging Conference in Twin Falls, Idaho. Freshman Emma Taylor also earned the title of National Champion in the Denver Carload contest.

Team members pictured included Sophia Ludwig, Wade Allen, Laila Beck, Emma Taylor, Beau Shaffer, Grayson Tedrow, Coach Justin Lewis.

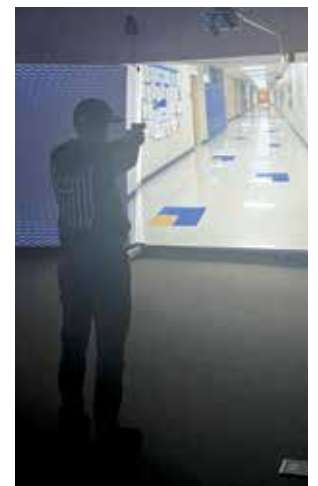
Southeast Education Center Tailors Programs to Serve Pike County

In the last year, JWCC's Southeast Education Center (SEC) in Pittsfield partnered with the West Central Illinois Criminal Justice Council MTU 9 to install a simulator to train police officers, with over two dozen officers having attended training to date.

High school students in the Pike County Creating Entrepreneurial Opportunities (CEO) program met at the SEC daily to hear from local entrepreneurs and envision their future businesses. The SEC

hosted Investor breakfasts and the CEO Trade Show, showcasing the students' businesses.

The SEC received grants to create a food pantry named Blazer Bites for JWCC students, providing food items and toiletries. Additionally, the center trained over 20 Certified Nursing Assistants throughout the year and offers CNA courses in the fall, spring, and summer terms.



Trail Markers: STUDENT AND



Student Life Complements Learning

Members of JWCC's Student Government Association (SGA) plan and implement activities that create a vibrant student life to complement classroom learning. The photos above from this year show students, staff, and faculty at the Special Olympics, Polar Plunge, Blazer Bash, Cheer Signing, Dogwood Parade, Mr. John Wood pageant, community service projects, Student Lobby Day, Phi Theta Kappa International Honor Society induction, and Juneteenth Celebration.



At the end of the academic year, the JWCC student body elected the 2024-25 Student Government Officers. Pictured Back Row L/R: Student Trustee Kannon Dickerman, President Travis Duke, Secretary Carter Kasparie. Front Row L/R: PR Secretary Alaina Schmoe and Vice President Paige Seals.



College for Life Students Gain Workplace Skills

Students in JWCC's College for Life (CFL) program got a firsthand look at future career paths through a new job shadow program. Students connected with staff at JWCC and Blessing Hospital to learn about merchandising, welcome services, admissions, maintenance, and food and nutrition operations. CFL students learn workplace, advocacy, and college preparatory skills as part of the certificate program. Neurodiverse students are encouraged to contact Julie Quinn, the program's coordinator, at 217.641.4340.

Career Academies Help High School Students Earn More College Credit

JWCC created Career Academies and discounted two dual credit tuition rates to expand access to students pursuing college credit in high school. JWCC courses taught in person at a high school by that school's instructor have been discounted from \$170 per credit hour to \$50 per credit hour. Courses taught at a high school by a JWCC instructor were discounted from \$170 per credit hour to \$100 per credit hour. Both rates are inclusive of fees and took effect in the Fall of 2024. All other dual enrollment tuition rates for high school students remain the same.

2024 High School Grads **Brylin Lantz** (pictured left) from Southeastern High School, and **Eden Scheuermann** and **Brooks Sonethongkham** from Quincy High School completed their first two years of college through JWCC's Smart Start Transfer Career Academy.



JOHN WOOD COMMUNITY COLLEGE
SMART START
Earn college credits in high school



SCAN ME

To see dual credit courses offered by high school, scan the code.

COMMUNITY CONNECTIONS



JDub Academy Highlights Future Career Paths

Students in grades K-12 learned how they might connect interests to future careers during JWCC's long-standing JDub Academy. More than 400 students learned from first responders, artists, teachers, gamers, scientists and more during the June event.



Return of the Academic Challenge

The WGEM/JWCC Academic Challenge returned for its 30th season in the Mary Ellen Orr auditorium on JWCC's campus. The high school scholastic bowl tournament kicked off with an "All-Star Challenge," featuring eight standout players from local high schools. Macomb High School emerged victorious in the overall competition.

Hospitality & Culinary Arts Program Cooks Up Interest

In late June **Chef Vanessa Hall** and **Hal Axelrod** served up Salvadoran pupusas to a crowd in the College's courtyard to officially launch JWCC's new Hospitality and Culinary Management program. Students can enter the program this fall which offers a Culinary Certificate, a Hospitality Certificate, and an Associate in Applied Science in Hospitality and Culinary Management. It prepares students for roles in lodging and restaurant operations, covers food sanitation, culinary principles, supervision, front desk operations, sales, marketing, menu development, and cost control. The program also includes training for the State of Illinois Food Service Sanitation Manager's Certification and BASSET certification.



Scan the code to inquire about the program.



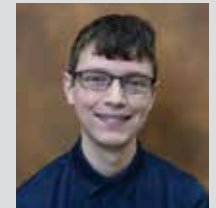
2023-2024 Faculty & Staff OF THE YEAR



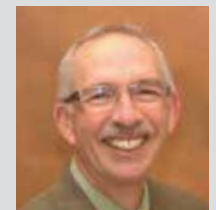
FULL-TIME FACULTY
Brenda Graff
Associate Professor of Mathematics



PART-TIME FACULTY
Jessica Snider
Instructor of Fine Arts



FULL-TIME STAFF MEMBER
Leonard Craft
Web Applications Administrator



PART-TIME STAFF MEMBER
Gary Bracy
Bookstore Assistant

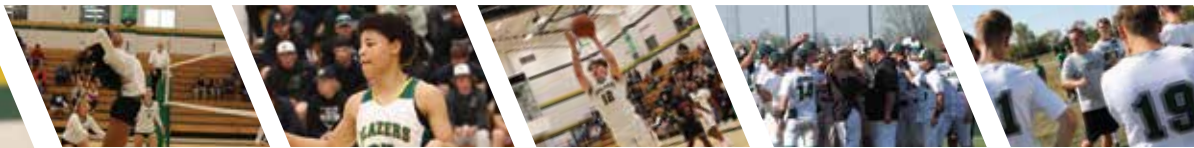


STUDENT WORKER
Nicholas Klingele
Bookstore

ATHLETICS *Blazes* INTO NEW ERA



Adam Hightower



The 2023-24 year was one of exciting transitions for student-athletes and coaches.

The College said farewell to Men's Basketball Coach and Athletic Director Brad Hoyt and welcomed Baseball Coach **Adam Hightower** as the leader of Trail Blazer athletics. The department ushered in an incredible class of new coaches ready to take student-athletes to a new level.



Ali Schwagmeyer-Belger, Camp Point Central and Quincy University standout, international professional basketball player, and AAU program

leader, took the reins of the women's basketball program. Belger will also serve as JWCC's assistant athletic director.



Former Keokuk star and JWCC basketball alum **Jonny Dahl** returned home to become the head men's basketball coach. Dahl is also

a coach for the Cross Over Hoops AAU program.

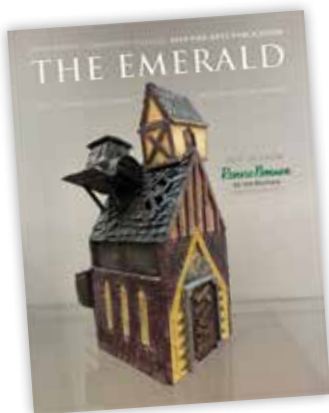


Kelsey Thompson now leads the Trail Blazer softball program and serves the College as an admissions advisor.



Jordan Boyer moved into the head coaching position for the women's volleyball program after serving as an assistant.

FINE ARTS PROGRAMS *Shine* WITH STUDENT CREATIVITY



John Wood Community College celebrated the talent of fine arts students through a publication and series of events. The winners of the Student Art Exhibition were announced, featuring an array of artwork in various mediums, including paintings, drawings, sculptures, and digital art.

This year's exhibition also marked the debut of "The Emerald," a fine arts publication that highlights the works of JWCC students in fine arts and creative writing.

In addition to the exhibition, JWCC's fine arts students presented fall, holiday, and spring concerts.

WINNERS OF THE STUDENT ART EXHIBITION

Best in Show
Jack Marchand
Mixed media sculpture
"Reverie Nomura"

Second Place
Dawsyn Perry-Broekemeier
Oil on canvas
"Not Retaliation, but Revenge"

Third Place
Maryn Kasza
Marker on paper
"Assembly of the Stars"

WINNERS OF THE STUDENT CREATIVE WRITING CONTEST

Fiction

First Place Ray Soudavanh, *"Prose and Cons"*
Second Place Nicole O'Rourke, *"1984 Reimagined"*
Third Place Abigail Santi, *"Strawberry Blonde"*

Non-Fiction

First Place Heidi Dimmitt, *"Remember Whose You Are"*

Poetry

First Place Abigail Santi, *"Briny Deep Thicket"*
Second Place Brea Cozen, *"Natural Disaster"*
Third Place Nicole O'Rourke, *"Ramblings on Valentine's Day"*

POST SEASON *Honors*



Katey Flynn Jaylen Lubbert Ben Kasparie Jackson Richmiller Joshua Talton

Several Trail Blazers earned All Mid West Conference and All Region Honors and 25 student-athletes signed letters of intent to continue their careers at four-year institutions.

SOCCER

Jackson Richmiller & Josh Sutton
All Region Team

WOMEN'S BASKETBALL

Katie Flynn
Conference Freshman of the Year
1st Team All-Conference, All Region

Jada Dupree
1st Team All-Conference, All Region

MEN'S BASKETBALL

Joshua Talton and Jordan Shelton
2nd Team All Conference, All Region

SOFTBALL

Jaylen Lubbert and Lilly Boschert
All Conference Honorable Mention

BASEBALL

Garrett Meyer
All Region, 2nd Team All Conference

Payton Mansfield
2nd Team All Conference

Kevin Martinez, Jorey Anderson and Ben Kasparie
Honorable Mention All Conference

VOLLEYBALL

Addie Force
All Conference Honorable Mention

Sadie Murdock
2nd Team All Region

Blazers Moving On to Four-Year Institutions

NCAA Division I

Payton Mansfield
Jacksonville State University

Ben Kasparie Purdue Fort Wayne University

NCAA Division II

Katie Flynn
Maryville University

Logan Robbins
Quincy University

Byron Blaise
Quincy University

Carson Moreno
Quincy University

David Castro
Clarion University

Garrett Meyer
Missouri S&T University

NCAA Division III

Luca Bagi
Knox College

Alex Loman
Illinois College

Landyn Smith
Greenville University

USCAA

Jose Pena
Atlantis University

NAIA

Kyle Hamilton
Culver-Stockton College

Nico Horvat
Kansas Wesleyan College

Josh Sutton
Columbia College

Thomas Youden
Missouri Valley College

Andrew Rudd
Missouri Valley College

Jackson Richmiller
Culver-Stockton College

Cayge Hughes
Culver-Stockton College

Joshua Talton Hannibal La-Grange University

Josiah Talton Hannibal La-Grange University

Braylon Diggs Hannibal La-Grange University

Connor Schwindeler
Culver-Stockton College

Addie Force
Culver-Stockton College

Amaya Webb
Bethany College

JOHN WOOD COMMUNITY COLLEGE *Foundation*

Thank You 2023-2024 DONORS

The John Wood Community College Foundation recognizes the alumni, businesses, foundations, organizations, and friends who support John Wood Community College through generous donations of money and time. The Honor Roll of Donors includes gifts to the JWCC Foundation received between July 1, 2023, and June 30, 2024. Thank you to our 2023-2024 donors:

INDIVIDUALS

Anonymous (37)
Kenneth Abbath
Susan Abbott
Harriet Adams
Mark Adams
Douglas Aeilts
Ron & Heather Amos
Deborah Amsler
William Anderson
Larry Armistead
Pend Armistead
William Arp
Danielle Ary
Joe & Diane Ary
Katie Ary
Patrick & Lisa Atwell

Hal & Hollis Axelrod
D. Keith Bailey
Alysa Bainter
Kenneth Balzer
Shelley Barkley
Sharon Barnett
Ruth Barrett
Lou Barta
Andy & Tami Bastert
Patrick Bauer
John & Marie Baumgartner
James & Karen Beadle
Bill Beard
James Behrens
Fred Beiter
William Belko
Leslie Bent

Teresa Bertelli
Devan Bevelheimer
Matthew & Ashley Bilgri
David & Susan Blickhan
Lawrence Blickhan
Dale & Judith Blomker
Sarah Bonness
Jori Bortorff
Gary & Kathleen Bracy
Carole Bradshaw
Phillip & Linda Bradshaw
Seth & Kate Brammer
Rob Brinkmeyer
Jerry & Carol Brockmiller
Garris Brown
Ali Browning
Josh Brueck

Bethany Bucholtz
Kimberly Buck
Judith Bugh
Larry & Tracy Bugh
David Bullard
Kristie Bunch
Robert & Rose Ann Bunte
Earl & Jeania Burton
Roger & Gerri Buss
Steve & Kim Buyck
Holly Cain
William Calkins
Sandra Callahan
Alisa Cameron
Dennis & Nancy Campbell
Stephen & Teresa Carlen
Tim & Trudy Carroll

Gary & Geraldine Carter
Barbara Casady
Esy & Angie Chalabiani
Jamie Chapman
Paula Chapman
Regina Chapman
Stephen Cherry
Kristie Chevalier
Barry & Jeanne Cheyne
Larry & Kathie Clark
Ronnie & Ellen Clendenny
John Clopton
Linda Coleberd
Peter & Shirley Collier
Phillip & Bonnie Conover
Heather Cook
Rod & Karen Cookson

Lois Coonrod
John & Helen Cornell
Carol Cornwell
LB Cornwell
Fred Cory
Kjersti Cory
Robert & Lisa Cowman
Leonard Craft III
Leonard & Susan Craft
David & Susan Cramsey
Anthony Crane
George & Maureen Crickard
Patricia Crow
Jim & Shari Cullumber
Christopher Curd
Kim & Lynn Curry
Barbara Dance

Pathways to Promise

The John Wood Community College Foundation launched the Pathways to Promise Scholarship, an initiative aimed at ensuring every student has the opportunity to pursue their education and achieve their academic goals.

The Pathways to Promise Scholarship will provide crucial financial support to students, helping them overcome the economic barriers that can hinder their educational pursuits. The initial goal of the scholarship campaign is to raise \$500,000,

a significant target that reflects our dedication to making a lasting impact on the lives of our students.



Currently, the JWCC Foundation awards \$200,000 in scholarships annually. The Pathways to Promise Scholarship aims to build on this solid foundation, enhancing our capacity to support even more students.

"We believe that by supporting our students financially, we are enabling them to focus on their studies, achieve their academic and career goals, and ultimately contribute to the growth and prosperity of our community," said Barbara Dietrich Holthaus, Executive Director of the JWCC Foundation.

The JWCC Foundation is calling on alumni, community members, businesses, and other stakeholders to join us in this important initiative.

To contribute, scan the code to the Pathways to Promise Scholarship, visit jwccfoundation.org or contact the JWCC Foundation at 217.641.4105 or foundation@jwcc.edu.



Thank You 2023-2024 DONORS

INDIVIDUALS

April Darringer
William & Laurie DeMont
Brenda DeSpain
Jason DeVerger
Susan J. Detwiler
Mark & Anne Dedert
Susan Deege
Beth Deters
Elaine Deters
Greg & Laura Deters
Kelsey Deters
Michael & Judith Deters
Richard & Beth Deters
Sara Deters
Stephanie Dickens
Shawn & Jennifer Dickerman
Jacqueline Dickson
Bob & M. Ann Awerkamp Dickson
Dave & Donna Dieker
Joseph & Alicia Dierker
Allison Dietrich
LilliAnn Dittmer
Brett Douglas
Nancy Dreyer
Adam Duesterhaus
Ricci Dula
Toni Dunker
Bill Durrall
Kathleen Ebbing
Anita Eberhardt
Maria Eckert
Rick & Mary Edwards
Roy & Marian Edwards
Chad Eftink
Richard M. & Laura G. Ehrhart

Michael & Gerese Elbe
William & Katherine Ellis
Gail Emerson
Matthew Entrup
Michael & Vicki Epperson
James & Janell Farmer
Christine Faron
Christina Farwell
Jacklyn Feldpausch
Misty Fierge
Linda Finnamore
DD & Janie Fischer
Larry & Tamara Fischer
Mary E. (Geise) Fischer
Bill & Melonie Fleer
Harold & Lynda Flesner
Ursula Flinspach
Kelli Fohey
Gordon Forbes
Donald & Dianna Foster
Eric Foster
Monica Foster
Jack Freiburg
Nathan & Brandy Frese
Rory Fundell, Jr
James & Melba Funk
Stephanie Furman
Jeff & Patricia Galle
John & Betty Gebhardt
Tracy Genenbacher
Christine Genenbacher-Leinbach
Steven & Kathy Gerecke
Cheryl Gerhardt
Craig & Gina Gilliland
HK Giltner
Bryce & Dona Gleckler
Robert & Laverda Gleckler
Joseph & Donna Goerlich

Dennis Gorman
Carla Gosney
J. Robert Gough
Brenda Graff
Robert Gray
Randy Greenwell & Julie Barry
Angela Greger - Anonymous
Jim & Evelyn Griffeth
Charles Gruber
Wendy Gunn
Bruce Guthrie
Corda Hagen-Suhling
David Hahs
Madelyn Haley
Richard Halter
Gary Handrick & Kathy Dooley
James & Rachel Hansen
Andrew Happekotte
Joe & Kim Harris
Shari Harris
Philip Harrison
Gregory Harutunian
Joe & Jana Hattley
Paula Hawley Sargent
Judy Haydon
Judy Hays
Milini Heckenkamp
Christopher & Kathleen Helsabeck
Bonnie Henke
Larry & Diane Herman
Kelly Herzog
Melissa Hess
David & Clairice Hetzler
Robert & Donna Hilgenbrink

Ric & Monica Hinkamper
Jaynalee Hively
Rob & Stephanie Hodgson
Barbara Holthaus
Adam Holtschlag
Evelyn Holtschlag
Jonathan Hoover
Ruth Hopper
John & Barbara Hopson
Michele Hopson
Connie Hornsey
Dennis & Connie Hoyt
Laura Hubbard
Cliff & Patricia Huddleston
Jenna Hull
Amy Hustead
Tina Huston
Gary & Kathryn Hyer
Mike & Donna Jansen
Ryan Jansen
Tina Jett
John Johannes
Dale Johnson
Kristina Johnson
Shirley Johnson
Susan Johnson
Bobby & Holly Jones
Gerhard Jung
Ginny Kamphaus
Christopher & Ronda Kaelke
Curtis & Julie Kelty
Harry & Shirley Kembel
Nathan & Barbara Kent
Dana Keppner
Karen Kerns
John & Linda Kestner
Terry Kestner
Alta King

Mary Kinscherf
Gary Kirlin
Nora Klingele
Melissa Knapp
Nicholas Knuffman-Brewer
Chris Koettters
Nathan Kraft
Ronald Kraft
Nick Krizmanic
Robert & Joyce Kroencke
Philip & Erin Krupps
Kenneth Kucera
Eric & Jill Kunzeman
Larry & Nancy Kunzeman
Dean La Velle
Sarah Laaker
John & Beverly Landis
Bryan Langston
Ron & Joan Lerner
Eric & Kelly Larson
J'Nelle Lee
Amy Lefringhouse
Jack Lemon
John Letts
Kelly Lewis
Lincoln & Barbara Lieber
Bradley Lipcaman
Judy Litchfield
Pete & Kelly Little
Vern Loeffler
Kayla Lomax
Courtney Loos
Barbara Lovelace
Jerry & Rebecca Lunt
Michael Maas
Marc Magliari
Brenda Manis
Beverly Markey
Murray Martin

Laura Mathews
Bruce Maxey
Linda Mayfield
Patricia McCaughey
Charles McClain
Darin & Nikole McCleary
Donald & Diana McCleary
Eugene & Beverly McClellan
Judith McCourt
Ryan McCreery
Rick & Patricia McElfresh
Joe & Kaylee McFarland
Brian McGee
Patty McGlothlin
Stanley & Sandra McKelvie
Spencer & Brittany McKeown
Steven McMillen
David & Marsha McMurray
Douglas McQuern
Susan McReynolds
Catherine Meckes
James Mentesi
Madison Metz
Jim & Charolette Meyer
Jeffrey, Anne & Grace Meyer
Justin & Amy Meyer
Louis Meyer
Tom & Sue Milius
Larry Miller
Vickie Miller
Darrel Mink
Douglas & Cindy Moore
Kyle Moore
Marilyn Moore
Samuel Moore
Sandra Moore

JWCC Celebrates 50 Years with Commemorative Book Release

John Wood Community College is proud to announce the release of a special 50th anniversary book, now available for purchase! Authored by Martha Rapp and the Muddy River News staff, this book chronicles JWCC's remarkable journey from initial resistance to national renown.

Featuring first-hand accounts from trustees, staff, faculty, alumni, and students spanning five decades, this book offers an intimate look at the history and profound impact of JWCC.

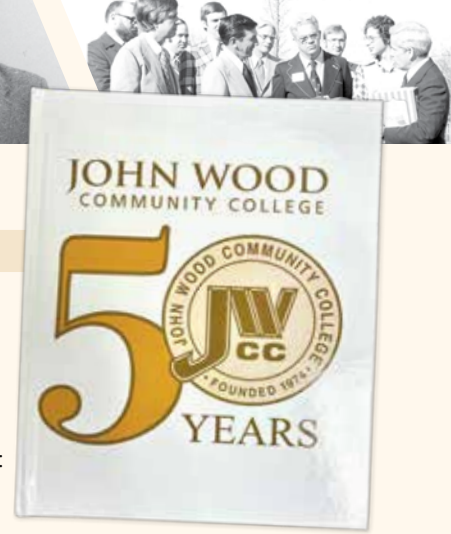
Purchase your copy today:

Soft Cover: \$20

Hard Cover: \$35

\$10 Mailing Fee.

Available at the JWCC Bookstore. For orders, contact: bookstore@jwcc.edu or foundation@jwcc.edu.



Celebrate our history and support our future!

5TH ANNUAL JWCC FOUNDATION WINE Pull Fundraiser

SEPTEMBER 19, 2024 5:30 - 8 p.m.

Quincy Country Club • Supporting student scholarships

Get tickets now at: jwccfoundation.org



JOHN WOOD COMMUNITY COLLEGE *Foundation*

Nick & Cheryl Moran
Laura Morgason-Oller
Paul Morrison
Kimberly Motley
Faith Mountain
Terry Myers
Tamerra Napier
Jerry Neal
Benjamin Neisen
Gerald & Nedra Neisen
Annette Newquist
Vicky Nieders
Frederic Nothold
Don & Stacey O'Brien
Nicole O'Rourke
Hal & Kathryn Oakley
Mary Oakley
Theresa Oakley
Leonide Ogalat
Elizabeth Ohnemus
Eryn Olivas
Arthur & Catherine Orlando
Tracy Orne
John Michael Orr
Juliann Orr
Loann Orr
Natalie Oswald
Daniel Paulson
David Penn
Hollie Perry
Patricia Person
Randy & Debbie Peter
Dean Peters
Jeffrey Pettitt
Lynn Phillips
Stephanie Phillips
Kyle Pho
Eric Piner
Kristal Pitzer

Brad & Jan Poulter
Timothy & Laura Powers
Steven Prater
Colin & Jenny Pursifull
Julie Quinn
Jose & Kathryn Quintero
Louis & Theresa Quintero
Dave & Jennifer Rakers
James & Martha Rapp
Margaret Ratajick
Justin Ray
Debbie Reed
Jim Reed
Linda Reed
Tena Reed
John Reinhardt
Kevin & Sheri Reller
Bryan & Jennifer Renfro
Herbert & Dori Rennecker
Mark Rennecker
Robert & Debbie Rhea
Mary Richards
Brad & Barb Richmiller
Heath Richmond
Deborah Riddell
Brandy Ridder
Kristen Ritterbusch
Emily Robbearts
Austin Roberts
Lance Robertson
Phyllis Robertson
Raea Rockwell
Kathleen Rodgers
Norman & Anita Rodriguez
Matthew Rolando
Meagan Root
Larry & Mary Susan
Royalty
Richard & Debra Royalty

Scott & Melinda Ruff
Shirley Ruth
Susan Saathoff
Jacob Savoia
Todd Saxton
Troy & Lindy Schenk
Randy Schild
Carroll & Carol Schleper
Delmer & Cheryl Schlueter
Phillip & Maggie Schmidt
Marianne Schmitt
Nancy Schneblin
Payne & Kristie Schoen
Chuck Scholz
Phyllis Schulte
Phillip & Gail Seaborn
James & Betty Selby
Allen & Alison Shafer
Pamela Shaffer
Carol Sharpe
Corey & Gina Sheurman
David Shinn
Janis Elbe Siebers
Steven Siebers
Eric & Leslie Sieck
William & Joyce Simpson
Randy & Mary Ann Sims
Douglas & Sheila Smith
H Smith
Joni Smith
Larry Smith
Nicholas Smith
Kent & Linda Snider
Lisa Snodgrass
Howard & Ruth Ann
Snowden
Darla Snyder
Phillip & Jeanne Soebbing
Steven Soebbing

Ryan Sparks
Leslie Spears
Gary & Rita Speckhart
Andrew & Karen Sprague
John Spring
Kristi Stadler
Bill & Brenda Stalder
Robert & Judith Steers
Margaret Steinbrecher
Phillip Steinkamp
Rochelle Steinkamp
Velda Stephens
Devron Sternke
Gene Stickman
Barbara Stricker
Kraig & Denise Sullivan
Monica Taft
Duane & Joyce Taylor
Judith Taylor
Samuel Tedrow
Michael Tenhouse
Mike Terry
Brian Terstriep
Jennifer Terstriep
Margie Thompson
Mary Tiekens
Paul Tracy
Terry & Glori Traeder
Judith Troxler
Cynthia Unmisig
James Upchurch
Ronald & Colae Vecchie
Richard Veihl, Jr.
Joni Veile
Scott & Jennifer Venvertloch
Valerie Vlahakis
Charles & Rebecca Vogel
Chuck & Yvonne Vogel
Joe & Ann Vogel

Diane Vose
David Voss
Jana Wagner
Henry Walton
Lyle & Janice Waner
Angie Ward
Steven & Marianne Ward
Jill Washausen
Brandon & Shannon
Waters
Ellen Waters
Alex Watson
Janet Watson
Amy Wear
Norma Weiman
Joshua & Brittany Welker
Dick Wellman
Marla Wheelan
William & Pamela White
John Wietholder
Christine Wiewel
Rebecca Will
Bethany Williams
Cindy Williams
Denise Williams
Tracy Williams
James Wilper
Kaitlyn Winship
Erin Wisslead
William E Wolters
Randy Wolfmeyer
Rodney Woods
Danny & Barb Woodyard
Barbara Wooleyhan
Marcy Wort
David & Lynn Wright
Michelle Wright
Jeanne Yingling
Ryann Zimmerman

Nicole Zulauf
Sam & Martha Zumwalt
Linda Coleberd
Peter & Shirley Collier
Phillip & Bonnie Conover
Richard & Julie Cook
Rod & Karen Cookson
Lois Conrod
LB Cornwell
Kjersti Cory
Tim & Susan Costigan
Bob & Lisa Cowman
Leonard & Susan Craft
David & Susan Cramsey
Kerwin & Norma Crawford
George & Maureen Crickard
Shelby Crow
Shari Cullumber
Brock Dace
April Darringer
Madeline Davis
William & Laurie DeMont
Brenda DeSpain
Mark & Anne Dedert
Susan Deege
Dave & Lynn Deters
Sara Deters
Susan Detwiler
Thomas Dickerson
Jacqueline Dickson
Bob & M. Ann Awerkamp
Dickson
Joseph & Alicia Dierker
Bill Dieterle
Terry L & Cheryl Dillard
Steve & Jean Disseler
LilliAnn Dittmer
Nancy Dreyer
Adam Duesterhaus

Thank You 2023-2024 DONORS

INDIVIDUALS

Sherald Dunham
R. Eileen Dunker
Kathleen Ebbing
Steven & Maria Eckert
Marian Edwards
Rick & Mary Edwards
Roy & Marian Edwards
Randall Egdorf
Laura Gerdes Ehrhart
Donald & Susan Elbe
Harrison Elbe
Justin & Heidi Elbe
Michael & Gerese Elbe
William Ellis
Laurel Eschweiler
Eric & Stephanie Ewing
Grant Farmer
Jim & Janell Farmer
Christina Farwell
Carlos Fernandez
Sandra Fessler
Linda Finnamore
DD & Janie Fischer
Larry & Tamara Fischer
Mary E. (Geise) Fischer
Bill & Melonie Fleer
Marty & Vicky Fleer
Douglas & Judie Flesner
Harold & Lynda Flesner
Wilfred & Edna Flesner
Ursula Flinspach
Anne Forbes
Gordon Forbes
Eric Foster
Monica Foster
George Fray
Mike & Joy Fray
Dennis & Linda Fredrickson
Debra Freeman
Jack Freiburg II
Greg & Leslie Frese
Nathan & Brianne Fritts
Jeff & Patricia Galle
Eric & Sara Gates
James Gay
Noah Gay
John & Betty Gebhardt

BUSINESSES

3JL Properties, LLC
ADM Animal Nutrition
Adams County Beef Producers
Adams County Farm Bureau
Adams Fiber
Adore Studio
Advanced Directional Drilling Inc.
Albert Investigations, Inc.
Alter Metal Recycling
Alter Trading #10
American Association of University Women
Amateur Sports Promotion
American Autoglass Inc
Architechnics Inc.
Arnold, Behrens, Nesbit, Gray PC
B & N Trucking Inc.
BASF Corporation
Bajco Illinois LLC
Blessing Health System
Brown County Farm Bureau
Bruenger Insurance Agency, Inc
BSN Sports
CGB – Naples
CNB Bank & Trust
Calhoun County Farm Bureau
Cass Cable TV Inc
Cass-Morgan Farm Bureau Foundation
Caterpillar Foundation
Caterpillar Inc Charity Custodial Account
Central State Bank
Central State Bank – Kinderhook
Charles Schwab
Commerce Bank
Community Foundation
Serving West Central Illinois & Northeast Missouri

Country Financial CC Services Inc
Craig Industries, Inc.
Culver Stockton College
Custom Dental Care, PC
DLH Associates
Dearwester Grain Services Inc
eTeamSponsor Inc
Edward Jones
Electric Oak
Farm View Farm
Farmers & Traders Palmyra
Farmers National Bank of Griggsville
Farmers State Bank
Finish Line Construction
First Bankers Trust Company
First Harvest Farm Management, LLC
First Harvest Land Exchange, LLC
First Mid Bank and Trust
Fortress Bank
Gardner Denver
Great River Economic Development Foundation
Great Rivers Bank
Hagerbaumer Excavating and Trucking
Hannibal Community of Christ
Hannibal Regional Healthcare System
Harry B. Axelrod Trust
Heartland Bank and Trust Company
Heartland Bank and Trust Company Community Support Fund at Illinois
Prairie Community Foundation
Heimer and Associates
Henry's Service Center
HOMEBANK
Illinois Community College System Foundation

Illinois Electric Cooperative
Illinois Prairie Community Foundation Inc
JH Concrete Construction, Inc
JWCC Agriculture Alumni Association
JWCC Bookstore
Janssen Seed & Services
Jil Tracy for State Senate
Keck Heating & Air Conditioning
Kiwanis Club of Quincy Foundation – Gem City
Kiwanis Club of Quincy – Golden K
Kiwanis International
Quincy – Noon
Klingner and Associates PC
Landmark Irrigation, Inc
Liberty Bank
Logan Agri-Service, Inc
ME Mechanical Inc
MKM Hog Farms, Inc
Maas Construction
Marion Gardner Jackson Charitable Trust
Memorial Hospital
Mercantile Bank
Morgan Stanley
Mt. Sterling Implement Company
Mt. Sterling/Rushville Veterinary Clinic, PC
Muddy River News LLC
N Kohl Grocer Company Inc
New Hope of Quincy Inc
Northeast Cattle Company
Nutrien Ag Solutions – Ferris, IL
Nutrien Ag Solutions – Mt. Sterling, IL
Nutrien Ag Solutions – Palmyra, MO
O'Donnell's Termite & Pest Control Inc
Oakley Lindsey Center
Obert Custom Farming
Partner's Inn Hi, LLC

Payne Schoen Consulting
Pershing
Peters Heating & A/C, Inc
Phil Klingele Construction LLC
Pike County Saddle Club
Pike County Veterinary Clinic
Poage Auto Plaza
PrairieLand FS Inc.
Quincy Medical Group
Quincy Recycle
Quincy Service Club
Quincy Society of Fine Arts
Rees Construction Company
Refreshment Services Pepsi
Rich's Body Shop
Richards Electric Motor Company
Rinella Company Inc
River City Parts Inc
Robber Law
Rotary Foundation of Quincy
Ruth E Mays TTEE
Schmiedeskamp, Robertson, Neu and Mitchell LLP
Shelter Insurance Company
Sib & Ginny Kamphaus Trust
Siebers Law LLC
Smoky Jennings Chevrolet
Sparks Home Automation & Real Estate LLC
Sport Supply Group Inc
State Street Bank & Trust Company
State Street Bar & Grill
Studio 4 Well Body & Mind LLC
Sunset Home
TD Ameritrade Clearing
TI Trust
Temauro, Inc.
The Chicago Community Foundation
The Hutchinson Fund

The JW Gardner II Foundation
The Maschhoffs, LLC
The Northwestern Mutual Life Insurance Company
Thiele Garage
TI Trust
Titan International
Tracy Family Foundation
Tri State Car Wash Solutions LLC
Two Rivers Farm Bureau Foundation
Two Rivers RC & D
Tylex Inc
UK Online Giving Foundation
Unit 4 Foundation
United Community Bank
United Systems Inc.
United Way of Brown County
Ursa Farmers Cooperative
Verlin L Lanier Trust
Vertical Raise Trust Account
Voya Institutional Trust Company
WGEM
Victor A Welper Insurance Agency Inc
Wells Fargo Advisors
Western Community Unit School District 12
Western Illinois Veterinary Clinic LLC
Jeff Whiston Agency LLC
Zanger & Associates

MATCHING GIFTS

ADM Animal Nutrition
Caterpillar Foundation
Tracy Family Foundation

IN MEMORY OF Clayton Barlow

Delmer & Cheryl Schlueter

Loretta A. Barrett

Ruth Barrett

River Moonlite Bugh

Judith Bugh
Larry & Tracy Bugh
The Bugh Crew

Jeff Burgess

Dave Rakers

Karen Carroll

Gordon Forbes

Reggie Coleman

Richard M. & Laura G. Ehrhart

Marce & Marcella Deters

Phillip & Jeanne Soebbing
Steven Soebbing

Ruth Deters

Anonymous
Roger & Gerri Buss
Mike & Judy Deters
Richard & Beth Deters
Judith McCourt
Susie Saathoff
Scott & Jennifer Venvertloh
Joe & Ann Vogel
Brandon & Shannon Waters
Ellen Waters

William Deters

Anonymous
Roger & Gerri Buss
Mike & Judy Deters
Richard & Beth Deters
Judith McCourt
Susie Saathoff

Scott & Jennifer Venvertloh
Joe & Ann Vogel
Brandon & Shannon Waters
Ellen Waters

Dan Dietrich

Barbara Holthaus

W. Kirby Eber

Eugene & Beverly McClellan

Harry Elbe

Anonymous

Richard Emerson

Lyndsey Binstead
Chad Borrowman
Brenda DeSpain
Derek DeSpain
Drew DeSpain
Adam Fencik

Noah Fencik
Gail Emerson
Lauren Nergenh
Michael Risley
Steven Risley
Alexis Stinebaker

Mark Goehl

Barbara Holthaus
Scott & Jennifer Venvertloh
Angie Ward
Danny & Barb Woodyard

Kathryn Jo Gray

Anonymous
Robert Gray

Vicky Harrison

Anonymous
Mark Adams
Joshua Brueck
Patty McGlothlin

Paul Heath

Robert Hilgenbrink

John R Hopson

John H Hopson

Dr. J. Victor Hopper

Roy & Marian Edwards
Ruth Hopper

Myron (Bill) Koch

Larry Miller

Dan Larner

Ron & Joan Larner

Mary Larner

Ron & Joan Larner

Mary Beth Lenz

Betty Balzer
Kenneth Balzer
Leslie Bent
Rob Brinkmeyer
Steve & Kim Buyck
Dave & Donna Dieker

Rory Fundell, Jr.

Jeff Galle

Cliff and Patricia

Huddleston

Shirley Johnson

Robert & Joyce Kroencke

Darin & Nikole McCleary

Donald & Diana McCleary

David & Marsha McMurray

Randy & Debbie Peter

Brad and Jan Poulter

Phyllis Robertson

Larry & Mary Susan

Royalty

Kraig & Denise Sullivan

William & Pamela White

Sam & Martha Zumwalt

Matthew McElfresh

Rick & Patricia McElfresh

Samuel Tedrow

Yes, I want to support my community college
with a contribution to the John Wood Community College Foundation.

Enclosed is my gift of \$_____ In support of: Area of Greatest Need or Program or Scholarship: _____

Name(s) (as you would like it to appear in donor recognition) _____

Address _____ City _____ State _____ Zip _____

Email _____ Phone _____

JWCC does not sell or exchange email lists.

I wish to remain anonymous.

This gift is made in honor/memory of: _____

I would like more information about creating a named fund or making a planned gift.



To make a contribution via credit card call 217.641.4105, visit jwccfoundation.org or scan this code to make a secure gift online.

Please make checks payable to JWCC Foundation. This form can be mailed to: JWCC Foundation, 1301 S 48th St, Quincy, IL 62305.
Gifts to the Foundation are tax deductible to the extent provided by the law.



BOARD OF DIRECTORS



Donna Jansen
President



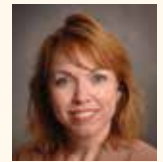
Bob Gray
Treasurer



Diane Ary
VP / Secretary



Dave Rakers
Past President



Barbara Holthaus
Executive Director



Gina Sheurman



Carol Brockmiller



Linda Coleberd



Joe Dierker



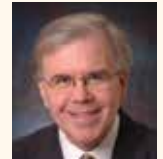
Janell Farmer



Jerry Hagmeier



Holly Jones



Jim Rapp



Bryan Renfro



Eric Thomas



Jil Tracy



Josh Welker



Travis Duke

Thank You for Your Support

For more information on giving, contact Barbara Holthaus at 217.641.4104 or bholthaus@jwcc.edu.

Beth Mandrell

Matt Rolando

Robert Moore

Sandra Moore

Ivan Paul

Harriett Adams
Randy Wolfmeyer

Jack Pool

Kathy Ebbing

Raymond & Shirley Porter

Monica Taft

Barbara L Willis Prater

Linda Finnamore

Douglas Rabe

Jim & Martha Rapp

Dr. B.J. Rodriguez

Stephen Cherry

Angela Spiker

April Darringer

Damian Vogel

Scott & Jennifer Vogel

Bernie Weiman

Norma Weiman

Kyle Woods

Kenneth & Marilyn Abbath

Frank Armistead

Larry Armistead

Coy & Alysia Bainter

Tim & Nicole Browning

Stephen & Teresa Carlen

& Family

Bonnie Cartwright

Northeast Cattle Company

Ronnie & Ellen Clendenny

Kim & Lynn Curry

Far View Farm

Donald & Dianna Foster

James & Melba Funk

Jeff & Pat Galle

Bob Garner

Steve & Kathy Gerecke

Bryce & Dona Gleckler

Robert & Laverda Gleckler

Great Rivers Bank

Jim & Evelyn Griffeth

Corda Hagen Suhling

Jaynalee Hively & Family

Dale Johnson

Susan Johnson

Gerhard Jung

John & Linda Kestner

Eric & Jill Kunzeman

Larry & Nancy Kunzeman

Ed Logan

Logan Agri-Service, Inc.

MKM Hog Farms, Inc.

Janet Main

Monty Martin

Murray Martin

Tom & Sue Milius

Darrel Mink

Kimberly Motley

CGB Naples

Pike County Saddle Club

Verne & Linda Reed

Brenda Reinebach

Herbert & Doris Rennecker

Mark Rennecker

Rebecca Rhodes

Mary Jane Richards

Jack Ruble & Family

Carroll & Carol Schlieper

Phillip & Gail Seaborn

Christine Simmerman

Douglas & Sheila Smith

Robert & Judith Steers

Gene Stickman

Mike Tenhouse

Farmers & Traders Palmyra

Lyle Warner

Mike Whitlock & Family

Robert Whitlock & Family

Eric & Bethany Williams

Verlin L Lanier Trust

Susan Wright

Joni Smith

IN HONOR OF

Jackson Bredensteiner

Dale & Judy Blomker

John & Mollie Kembel

Harry & Shirley Kembel

Ian Meyer

Jim & Charolette Meyer

Justin Meyer

Jim & Charolette Meyer

Every effort has been made to ensure all donors have been listed. Please report corrections to foundation@jwcc.edu



JOHN WOOD
COMMUNITY COLLEGE

1301 South 48th Street | Quincy, IL 62305

ECRWSS
Nonprofit Org.
U.S. POSTAGE
PAID
Quincy, IL 62301
Permit No. 971

Postal Resident

OUR MISSION:

John Wood Community College enriches lives through learning by providing accessible educational opportunities and services at an exceptional value.

JOHN WOOD COMMUNITY COLLEGE
SMART START
Earn college credits in high school

START
Early
SAVE
Big



Begin your career path before graduating high school!

Eden Scheuermann and Brooks Sonethongkham graduated from QHS **and** JWCC in May 2024 through JWCC's Smart Start Transfer Academy. Visit jwcc.edu/smartstart for details.

Give your student a head start and decrease total college debt!

Earn college credits in high school at JWCC's lowest tuition rates.

Courses as low as
\$150*

*Scan to discover courses and rates available through your high school.



Attend or graduate from JWCC?

Join the
Trail Blazer NETWORK

- ➔ Stay in-touch with college happenings
- ➔ Get free offers & discounts
- ➔ Connect your business or organization with JWCC students



SCAN CODE TO JOIN AND GET AN EXCLUSIVE T-SHIRT!

